

# Pullman Adopt-A-Stream Program

---

## 2020 Stream Steward Manual

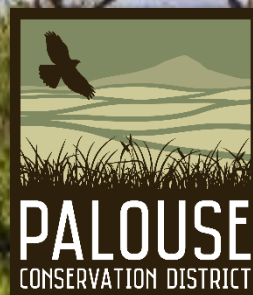
*Partnership with:*

### City of Pullman Stormwater Services

325 Paradise Street  
Pullman, WA 99163  
509.338.3314

### Palouse Conservation District

1615 NE Eastgate Blvd, Suite H  
Pullman, WA 99163  
509.332.4101  
[PalouseCD@palousecd.org](mailto:PalouseCD@palousecd.org)



## Adopt-A-Stream | Introduction

Please review and share this information with your stewardship group. If your stewardship group's leadership is changing, this **MUST** be shared with the successor as well.

### About the Adopt-A-Stream Program

The Pullman Adopt-A-Stream Program was started in 2011 by **City of Pullman Stormwater Services**, to engage community members, local business, and students in the preservation of healthy Palouse waterways through clean-up activities and annual maintenance. Similar to the Adopt-A-Highway Program, the streams that flow through the City of Pullman, Paradise Creek, South Fork Palouse River, Dry Fork Creek and Missouri Flat Creek, have been divided into "adoptable" stream segments to be maintained by community groups or individuals.

### In this manual:

1. Groups and Contacts
2. Roles and Responsibilities of AAS Stewards
3. Liability Waiver and Photo Release
4. Segment Maps and Descriptions
5. Resources

### Questions or Concerns?

Please contact Jodi Prout, PCD Education and Outreach Coordinator

Phone: 509.332.4101 ext. 109

Email: [PalouseCD@palousecd.org](mailto:PalouseCD@palousecd.org)

Website: <https://www.palousecd.org/pullman-aas>



## Adopt-A-Stream | Groups and Contacts

Over the years, the Adopt-A-Stream program has welcomed new stewardship groups, as well as established lasting relationships since the beginning of the program. We are thankful for your continuous dedication to our local waterways and hope you will continue your commitment into the future.

Please see below if your Stewardship Group's information is correct.

Stream Segment	Stewardship Group	Current Contact
<b>Aqua</b>	Palouse Democratic Socialists of America	Shannon Brenner
<b>Light Brown (Brown A)</b>	WSU Chi Sigma Alpha	Angela Acosta
<b>Dark Brown (Brown B)</b>	WSU Alpha Kappa Psi	Justein Coffelt
<b>Black</b>	Palouse Conservation District	Jodi Prout
<b>Green</b>	Contact PCD to Adopt!	
<b>Lilac</b>	Pullman Civic Trust	Bobbie Ryder
<b>Peach</b>	Contact PCD to Adopt!	
<b>Navy</b>	Pullman Safeway Employees	Ray Stirling
<b>Pink</b>	Lincoln Middle School Builders Club	Denise Thompson
<b>Lime</b>	WSU Sigma Lambda Beta	Pablo Chavez
<b>Crimson</b>	UI Environmental Philosophy Class	Brooke Behunin
<b>Red</b>	WSU Center for Civic Engagement	Jane Estocin-Klaiber
<b>Orange</b>	Phoenix Conservancy	Kayla Wakulich
<b>White</b>	WSU Environmental Science Club	Emily Hogan
<b>Blue</b>	WSU Shark Conservation Club	Amanda Krieger
<b>Yellow</b>	WSU American Society of Civil Engineers	Keenan Thomas

If the contact information is incorrect, please submit the following:

1. The current Contact Person will need to submit a **Stream Steward Enrollment Form**, updating their contact information and acknowledging they agree to the liability waiver and photo release as the representative of your group. At all times, we need a liability waiver and photo release agreed to by the current Contact Person for your Stewardship Group. Groups that have not submitted the release will not receive credit for their service hours.
2. If your group is affiliated with the university, leadership may change at the start of the academic semester. To make the transition easier, before you depart as the Contact Person for the summer or academic break, ask your successor to enroll through the **Stream Steward Enrollment Form** and share this manual with them.

# Adopt-A-Stream | Roles and Responsibilities

## It's as easy as 1-2-3!

Individuals, families, community groups, local businesses, and student organizations are encouraged to adopt a stream segment to maintain. By adopting a stream segment, the Stewardship Group is committing to the following:

### 1. Remove litter / recyclables from your assigned segment a minimum of three times per calendar year

- a. There is no minimum or maximum number of participants required for each clean-up event on your stream segment.
- b. Your Stewardship Group does not need to consult PCD ahead of time unless PCD can be of some assistance to your clean-up effort. PCD may be able to provide gloves or trash bags. If you would like assistance, please contact Jodi Prout at 509.332.4101 ext. 109 or [PalouseCD@palousecd.org](mailto:PalouseCD@palousecd.org).
- c. Pick up litter and recyclable material on the ground and in the stream. Please keep recyclables separate and dispose of accordingly.
- d. The disposal of litter or recyclables is the responsibility of the Stewardship Group. If there is a large item that needs future assistance, please make note of the item and its location with photos and detailed descriptions. Please pass this information on to Jodi Prout at [PalouseCD@palousecd.org](mailto:PalouseCD@palousecd.org).
- e. Once a group has signed up to become a steward, a sign is installed at a prominent location along the segment, advertising participation to the Pullman community. For those locations along the river where signs are not feasible, an alternate method of recognition will be used.

### 2. Adhere to the following safety and etiquette guidelines:

- a. BE SAFE! Please make sure your group's participants wear highly visible clothing and travel with a partner along the stream. Avoid cleaning near roads or other hazardous locations. Be conscious of the stream flow and avoid cleaning during high flow events.
- b. Dress appropriately for the weather. Gloves and closed-toed shoes or boots are highly recommended.
- c. Schedule your event during daylight hours only.

- d. Please be respectful of PRIVATE PROPERTY, especially gardens and landscaped plants. The majority of land along Pullman waterways are private and should be treated with respect. PCD has secured permission to access private lands for the purpose of cleaning and maintaining the stream.
- e. Leave natural debris where it is found. Woody debris is beneficial for healthy aquatic ecosystems.
- f. Please be respectful of wildlife and their habitat. Do not disturb nesting birds or animals and their young.

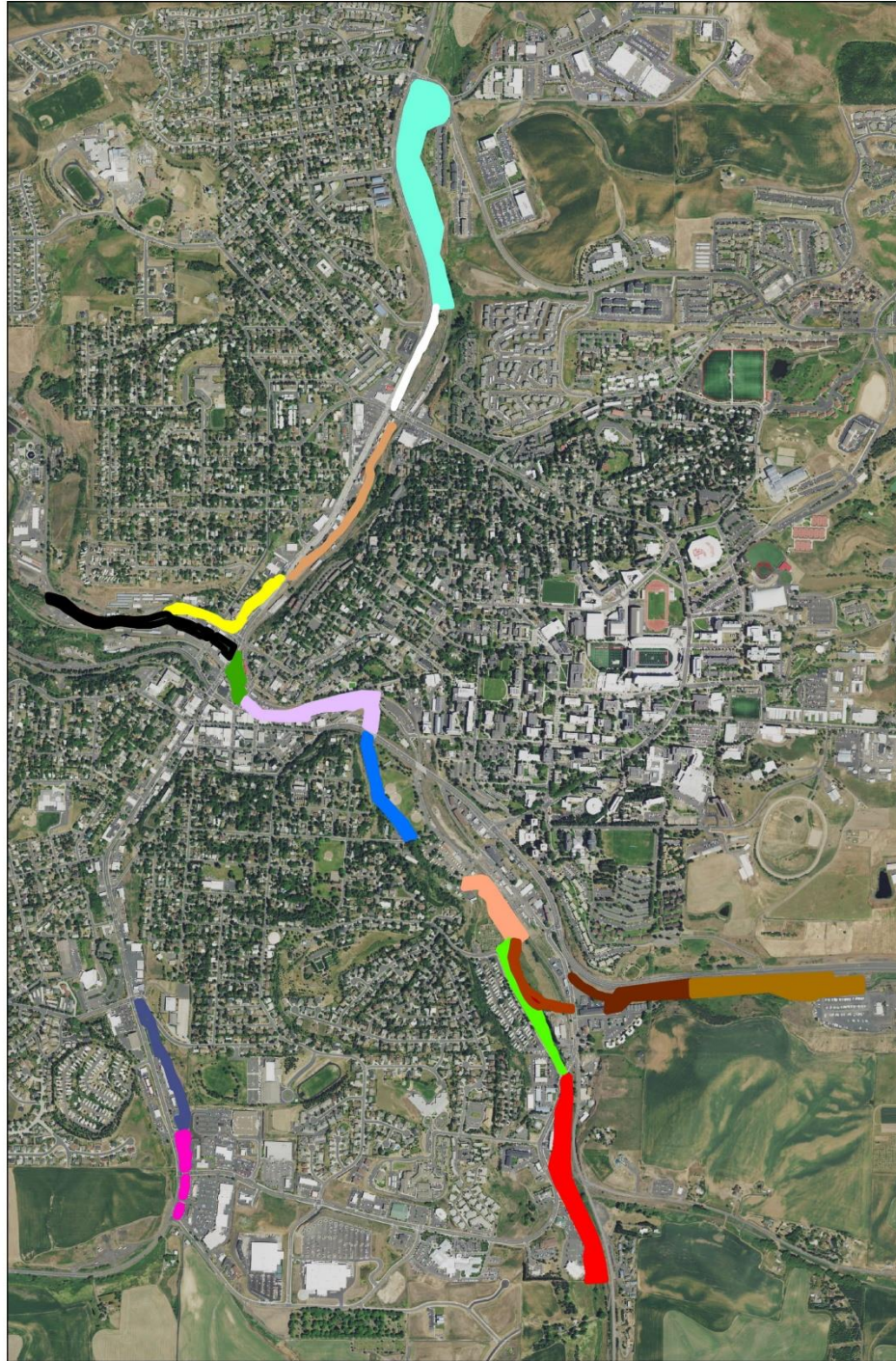
**3. Please report all stream clean-up activity to PCD**

- a. Help us make sure we are keeping our streams clean by reporting your group's stream cleaning events. After each clean-up event, fill out this **Stream Steward Clean-Up Report** or fill it out on our [website](#) to record the following:
  - i. Date of the clean-up event
  - ii. Number of participants that attended the event
  - iii. Approximate number of bags of trash and recycling removed from your segment
  - iv. Any photos of your event
  - v. Any interesting stories or observations you experienced!



# Adopt-A-Stream | Stream Segments

Where is your segment?



0 375 750 1,500 2,250 3,000 Feet  
[www.palousecd.org/pullman-aas](http://www.palousecd.org/pullman-aas)



## Stream Segment Descriptions

The following descriptions of each stream segment location may also be found on our website ([www.palousecd.org/pullman-aas-segments](http://www.palousecd.org/pullman-aas-segments)), along with links to detailed maps of each individual segment to help you navigate your segment.



**Aqua Segment:** Palouse Democratic Socialists of America

**Segment Description:** On Missouri Flat Creek along Grand Avenue from Terre View Drive south to pedestrian bridge (across Grand Ave from Turner Drive) – both sides of Missouri Flat Creek and all area between the creek and Grand Avenue (including the trail).



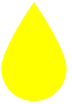
**White Segment:** WSU Environmental Science Club

**Segment Description:** On Missouri Flat Creek along Grand Avenue from pedestrian bridge to Stadium Way – west side of Missouri Flat Creek to the road ONLY. Also includes bike path from pedestrian bridge to Stadium Way.



**Orange Segment:** Phoenix Conservancy

**Segment Description:** On Missouri Flat Creek from Stadium Way to Grand Avenue bridge (across from UPS) – east side of Missouri Flat Creek ONLY.



**Yellow Segment:** WSU American Society of Civil Engineers

**Segment Description:** On the Missouri Flat Creek from Grand Avenue bridge (in front of UPS Store) to the confluence of Missouri Flat Creek and the South Fork Palouse River along Park Avenue.



**Black Segment:** Palouse Conservation District

**Segment Description:** On the South Fork of the Palouse River from Grand Avenue by Four Star Supply to downstream past warehouses.



**Green Segment:** AVAILABLE

**Segment Description:** On the South Fork of the Palouse River from Grand Avenue to Kamiaken Street – both sides of the South Fork Palouse River.



**Lilac Segment:** Pullman Civic Trust

**Segment Description:** On the South Fork of the Palouse River from Kamiaken Street to the Main Street bridge – both sides of the South Fork Palouse River.



**Blue Segment:** WSU Shark Conservation Club

**Segment Description:** On the South Fork of the Palouse River from the Main Street bridge to South Street bridge (adjacent to city playfields) – both sides of the South Fork Palouse River.



**Peach Segment:** AVAILABLE

**Segment Description:** On the South Fork of the Palouse River from pedestrian bridge near Koppel Farms Community Gardens along bike path. BOTH sides of South Fork Palouse River to private bridge at the end of Benewah Street.



**Crimson Segment:** U of I Environmental Philosophy Class

**Segment Description:** On the South Fork of the Palouse River from Bishop Boulevard to pedestrian bridge near Koppel Farms Community Gardens along bike path. East side of South Fork Palouse River ONLY.



**Red Segment:** WSU Center for Civic Engagement

**Segment Description:** On the South Fork of the Palouse River from Bishop Blvd along Johnson Road to the Village Theaters. Segment includes area from bike path to confluence with South Fork Palouse River – BOTH sides of river.



**Light Brown (Brown A) Segment:** WSU Chi Sigma Alpha

**Segment Description:** On Paradise Creek along both sides of the Chipman Trail from the Wheatland RV lot to the turnaround/pullout with the interpretive signs (includes everything in the floodplain from the south side of the creek to the highway).



**Dark Brown (Brown B) Segment:** WSU Alpha Kappa Psi

**Segment Description:** On Paradise Creek along both sides of the Chipman Trail from the turnaround/pullout with the interpretive signs to Bishop Blvd (includes everything in the floodplain from the south side of the creek to the highway).



**Pink Segment:** Lincoln Middle School Builders Club

**Segment Description:** On Dry Fork Creek along South Grand Avenue from its intersection with Fairmount Rd. to the Shopko Driveway (right next to the Daily Grind).



**Navy Segment:** Pullman Safeway Employees

**Segment Description:** On Dry Fork Creek from the end of the Pink section at the Shopko driveway (right next to the Daily Grind) to Crestview St., both sides.



**Lime Segment:** WSU Sigma Lambda Beta

**Segment Description:** On the South Fork of the Palouse River along Professional Mall Boulevard from Derby Street to Bishop Boulevard. West side of South Fork Palouse River ONLY.



## Adopt-A-Stream | Resources

This manual is intended to serve as a resource for Adopt-A-Stream participants and Stewardship Group Contact Persons. **Please ensure that as leadership change in your group, this manual follows.** It will expedite the process and facilitate continued participation for your group.

All the information in this packet can be found at the **Pullman Adopt-A-Stream website**. Below is a list of useful links and important contact information if any questions or concerns arise.

### Pullman Adopt-A-Stream Program Homepage

*How did the program start? How does it work?*

[www.palousecd.org/pullman-aas](http://www.palousecd.org/pullman-aas)

### Pullman Adopt-A-Stream Segments and Maps

*Where is the segment I am responsible for cleaning? This site contains maps and written descriptions of each stream segment.*

[www.palousecd.org/pullman-aas-segments](http://www.palousecd.org/pullman-aas-segments)

### Pullman Adopt-A-Stream Participation Guidelines

*See this website for helpful hints on how to stay safe, be respectful of others' property, and have fun while serving the community.*

[www.palousecd.org/pullman-aas-stewardship](http://www.palousecd.org/pullman-aas-stewardship)

### Pullman Adopt-A-Stream Contact:

Jodi Prout, Education and Outreach Coordinator  
 Palouse Conservation District  
 1615 NE Eastgate Blvd, Suite H · Pullman, WA 99163  
 Phone: 509.332.4101 ext. 109  
 Email: [PalouseCD@palousecd.org](mailto:PalouseCD@palousecd.org)

