



# Palouse News

*Conserving the Palouse together*

Fall 2018

Office hours Monday-Friday 8:30-4:30pm

509.332.4101 · [www.palousecd.org](http://www.palousecd.org) · [pcd@palousecd.org](mailto:pcd@palousecd.org)

## Accomplishments

June—November 2018



33

**CostShare Agreements**  
signed by landowners



\$602,246

in **CostShare assistance**  
to landowners



5,326

**Acres of conservation**  
practices implemented

## Conservation Success on the Palouse

We've been busy in the field this fall helping community members meet their conservation goals and we are excited to share a few of our highlights.

### REGIONAL CONSERVATION PARTNERSHIP PROGRAM (RCPP)

The Regional Conservation Partnership Program (RCPP) had another successful year, partnering with the Natural Resources Conservation Service to put nearly \$250,000 in conservation projects on the ground. Over the next few years, landowners will be implementing nearly **6,000 acres of direct seed, over 4,000 acres of nutrient management, 9.18 acres of stream buffers, and 8.2 acres of alternative crops.**



### ORCA DAY VOLUNTEER EVENT, SATURDAY NOVEMBER 10TH



25 volunteers from the Pullman Civic Trust, WSU Shark Conservation Club, and WSU Environmental Science Club, joined us for a region wide day of action to connect people to the critically endangered Southern Resident Orca Whales. Conservation districts across Washington hosted restoration events that addressed water quality. Restoration efforts on the Palouse help improve downstream water quality and help keep water temperatures cooler in the Snake River.

### GETTING OUR HANDS DIRTY

Our Field Crew and AmeriCorps members have been busy out in the field, working with volunteers, planting riparian corridors and pounding posts for bank stabilization. **1,365 riparian plants in gallon pots have been planted and 500 willows harvested with the help of 150 volunteers, totaling 330 volunteer hours.**



Thank you to all our partners and community members who have made this past season such a success. We couldn't have done it without you!

**If you are interested in finding out how you can get involved or more about our services, head to our website or give us a call.**

## Results from a Case Study in Tillage Practices

By Ryan Boylan, Research and Monitoring Coordinator

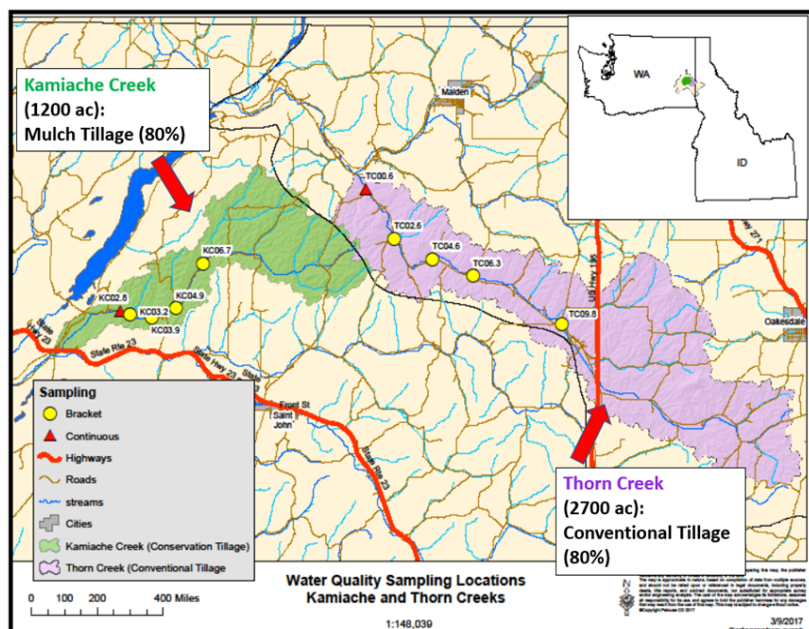
The Research and Monitoring Program has been working hard to collect information that helps the District, landowners and lawmakers understand the effectiveness of the conservation practices that we install. Our main goal is to determine if these practices contribute to improvements in water quality, soil health and wildlife habitat throughout the Palouse River watershed.



One of the many projects that we have been working on for the past two years is the collection of water quality and stream flow data from Kamiache and Thorn Creek watersheds near St. John Washington. A paired watershed study of this type allows to compare data from a watershed that has few conservation practices installed, which we call the control, with a watershed that has many conservation practices installed, which we call our treatment. In this case Thorn Creek Watershed serves as our control with 20%

of the total agricultural land under mulch tillage and 80% under conventional tillage. Kamiache Creek watershed serves as our treatment where 80% of the total agricultural land is under mulch tillage and 20% is conventionally tilled.

The first year of data collection indicates that Kamiache Creek is generating 5.5 times less sediment than Thorn Creek. Annual Sediment loads from water year 2017 in Kamiache Creek were 220 tons (0.02 tons/acre) compared to 2,447 tons (0.1 tons/acre) from Thorn Creek. Another way to think about this is the sediment leaving Kamiache Creek would cover WSU's football field with three inches of soil from the endzone to the 34 yard line and the sediment Thorn Creek would cover the entire field, endzone to endzone, with 12 inches of soil.



While this data makes a compelling case for conservation tillage, there are several other factors, such as watershed size, annual precipitation, soil types and tile drainage that need to be considered when explaining the differences in sediment loads from both watersheds. The research and monitoring program will continue to work on monitoring water quality and teasing out factors that are driving the trends in sediment over the next couple of years.

If you are interested in learning more about the Research and Monitoring Program or have any ideas for new studies feel free to contact **Ryan Boylan**, [ryanb@palousecd.org](mailto:ryanb@palousecd.org).



Palouse Conservation District 2019 TREE SALE  
ORDER NOW! PRE ORDER DEADLINE is December 15, 2018

PICK UP TREES March 29th 9:00am to 4:00pm & March 30th 10:00am to 1:00 pm

\*\*\*PLEASE READ ORDERING INSTRUCTIONS ON THE BACK OF THIS ORDER FORM\*\*\*

You can also find order forms and species descriptions online at our website: <http://www.palousecd.org>

NAME \_\_\_\_\_ DATE \_\_\_\_\_

ADDRESS \_\_\_\_\_ HOME PHONE \_\_\_\_\_

E-MAIL ADDRESS \_\_\_\_\_ CELL PHONE \_\_\_\_\_

Would you like to receive our quarterly newsletter? ☐ NO ☐ YES ( ☐ mail or ☐ electronic copy)

SPECIES	QUANTITY	\$ AMOUNT
<b>10 TREES IN A BUNDLE @ \$15.00 A BUNDLE</b>		
AUSTRIAN PINE		
COLORADO BLUE SPRUCE		
DOUGLAS FIR		
GRAND FIR		
PONDEROSA PINE		
		Total=
<b>10 TREES IN A BUNDLE @ \$16.00 A BUNDLE</b>		
WESTERN HEMLOCK		
WESTERN LARCH (Tamarack)		
WESTERN WHITE PINE		
WESTERN RED CEDAR		
		Total=
<b>10 TREES IN A BUNDLE @ \$19.00 A BUNDLE</b>		
OREGON GRAPE, Tall		
ROCKY MOUNTAIN MAPLE		
QUAKING ASPEN		
MOCK ORANGE (Syringa)		
MOUNTAIN ALDER		
WATER BIRCH		
		Total =
<b>10 SHRUBS IN A BUNDLE @ 17.00 A BUNDLE</b>		
BLACK HAWTHORN		
BLUE ELDERBERRY		
RED OSIER DOGWOOD		
SERVICEBERRY		
SNOWBERRY		
NOOTKA ROSE		
WOODS ROSE		
CASCARA		
PACIFIC NINEBARK		
GOLDEN CURRANT		
BLACK COTTONWOOD		
CHOKECHERRY		
		Total =
<b>BUNDLES OF 10--72" CUTTINGS@ \$20.00 A BUNDLE</b>		
COYOTE WILLOW		
BLACK COTTONWOOD		
DRUMMOND WILLOW		
MACKENZIE WILLOW		
PACIFIC WILLOW		
PEACHLEAF WILLOW		
RED OSIER DOGWOOD		
		Total =

PLEASE COMPLETE AND MAKE

CHECKS PAYABLE TO:

Palouse CD

1615 NE Eastgate Blvd. Suite H

Pullman, WA 99163

SUB-TOTAL

Add 7.8% Sales Tax

BALANCE DUE

[pamf@palousecd.org](mailto:pamf@palousecd.org)

OR CALL PCD OFFICE (509) 332-4101

cut along the dotted line

## Palouse Conservation District 2019 TREE SALE

**ORDER NOW! PRE ORDER DEADLINE is December 15, 2018**

**PICK UP TREES March 29th 9:00am to 4:00pm & March 30th 10:00am to 1:00 pm, 2019**

### Ordering Instructions

1. Include your personal information. PLEASE INCLUDE YOUR EMAIL ADDRESS (if you have one). If you do not have an email address, please include your phone # so we can contact you if needed.
2. All plants are bareroot seedlings unless otherwise noted.
3. You can also find order forms and species descriptions online at <http://www.palousecd.org>
4. Pre-orders must be received by December 15, 2018. There is a limited number of plants so orders will be filled as they are received. Please contact ZachC@palousecd.org for plant availability if you would like to pre-order after December 15th.
5. Order confirmation, payment confirmation, and pickup reminders will be sent out via email. If you don't have email, you will receive a hard copy confirmation in the mail.
6. Plants will be available for pick up only on:

Friday, March 29th, 2019 from 9:00am until 4:00pm  
Saturday, March 30th, 2019 from 10:00am until 1:00pm

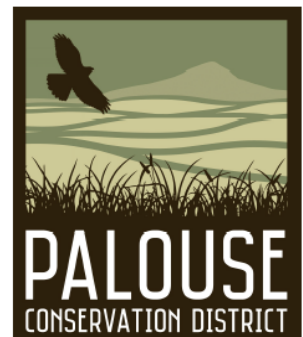
Plants must be picked up at the Palouse Conservation District Office located at:  
1615 NE Eastgate Blvd  
Suite H  
Pullman, WA 99163

7. **Attention!** Any order not picked up at the District office will be donated to conservation projects. These live plants must be planted immediately.

#### **\*\*PLEASE NOTE\*\***

Our office can only accept checks and/or exact cash  
for ALL transactions

Thank you! We hope that you enjoy your trees and shrubs!



## Palouse Conservation District Winter Talk Series

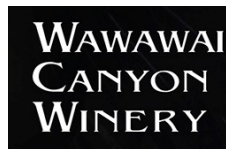
Join us for featured presentations on district programs and special topics this winter.  
Head to [www.palousecd.org](http://www.palousecd.org) for updates on programming.

**Thursday, December 13th at 6pm** *Paradise Creek Taproom Trailside, Pullman*

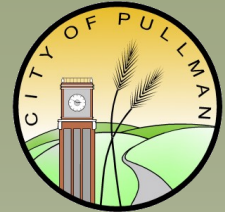
**Thursday, January 17th at 6pm** *Wawawai Canyon Winery, Uniontown*

**Thursday, March 7th at 6pm** *Palouse Caboose, Palouse*

**Thanks to these local businesses for sponsoring!**



## Make a lasting impact in your community by becoming a Stream Steward!



The Pullman Adopt-A-Stream Program was started in 2011 by City of Pullman Stormwater Services and managed by Palouse CD, to engage community members in the preservation of healthy waterways through cleanup activities and annual maintenance. Similar to the Adopt-A-Highway Program, the streams that flow through the City of Pullman, Paradise Creek, South Fork Palouse River, Dry Fork Creek and Missouri Flat Creek, have been divided into “adoptable” stream segments to be maintained.



**WSU Shark Conservation Club**

Individuals, families, community groups, local businesses, and student organizations can adopt a stream segment to maintain throughout the year for **annual fee of \$20**. By participating in the program, you are **committing to clean your stream segment 3 times annually**. A sign will be installed at a prominent location along the segment, advertising your participation to the Pullman community. If you're interested in becoming a Stream Steward, find out more at [www.palousecd.org/pullman-aas](http://www.palousecd.org/pullman-aas).

### Many thanks to our current Stream Stewards who keep our waterways clean!

Alpha Kappa Psi

Chi Sigma Alpha

Palouse Conservation District

Powell Family

Pullman Civic Trust

Pullman Safeway Employees

Sigma Lambda Beta

UI Environmental Philosophy

WSU Center for Civic Engagement

WSU Environmental Science 101

WSU Environmental Science Club

WSU Shark Conservation Club

WSU Society of Civil Engineers

## Palouse CD Awarded Grant Funding through DOE

The Palouse Conservation District has received funding from **five grants** from Washington State Department of Ecology for water quality improvements through conservation agriculture practices and riparian restoration, as well as focused research, monitoring, and outreach programs. We are excited to work with landowners and land managers to help achieve some of their conservation goals on their working lands.



Below are some of the goals of the awarded grants we hope to achieve over the next three to four years:

- Direct Seeding on at least 30 different operations
- The restoration of approximately 20 acres of stream riparian areas
- The development of a new tool, the Hydrological Characterization Tool, to model priority areas on a landscape level for water quality improvements, and the best management practices to achieve improvements
- Precision Agriculture workshops for farmers
- Scholarships for farmers to attend the Pacific Northwest Direct Seed Association Annual Conference
- A new interactive online mapping platform to display conservation successes on the Palouse

Although these grants fill up quick for on-the-ground work, contact the district anytime to see how we can help you!

*Looking to address stewardship practices on your farm or ranch while protecting agricultural viability?*

**Check out the Whitman County Voluntary Stewardship Program (VSP)!**



VSP provides an innovative approach to protecting critical areas on agricultural lands that enhance our environment, through voluntary measures, while promoting agriculture in Whitman County. VSP allows farmers and ranchers more flexibility in either using programs or self-funding stewardship strategies to protect and/or restore critical areas. VSP also collects previous and on-going project data from all projects that landowners want to report, which will document participation and the importance of agriculture viability. Visit [www.whitmancountyvsp.com](http://www.whitmancountyvsp.com) for more information.

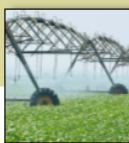
**Critical areas include:**



Wetlands



Fish and Wildlife Habitat



Aquifer Recharge Areas



Geologically Hazardous Areas



Frequently Flooded Areas

**These technical providers look forward to working for you!**

Palouse CD (509) 332-4101

Palouse-Rock Lake CD (509) 648-3680

Pine Creek CD (509) 285-5122

Whitman CD (509) 288-4644

Whitman County Farm Bureau

Whitman County Cattlemen Association

Whitman County Association of Wheat Growers



### Palouse Land Trust Welcomes New Executive Director

We're thrilled to see one of our own, Lovina Englund, in a new position as the Executive Director of the Palouse Land Trust. Lovina worked with the district until April 2018 as an Agricultural Resources Coordinator, applying her years of local conservation experience to building relationships with Palouse landowners. We look forward to continuing our partnership with the Palouse Land Trust with Lovina in this new role.

## Welcome to our new staff and AmeriCorps members



**Stephanie Harper**  
*Conservation Coordinator*

Stephanie began working for the district in September 2018, working with landowners throughout the district to implement conservation projects to reduce soil erosion, increase water quality, and provide suitable habitat for wildlife. She holds a B.S. in Environmental Science and a M.S. in Biology. Stephanie has a diverse background including experience in research, weed management, and habitat assessment. Outside of work she enjoys hiking, camping, and spending time with her two dogs.



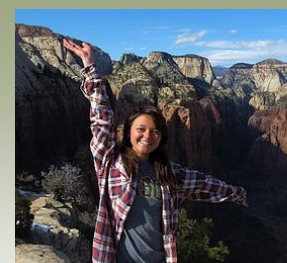
**Caitlin Hinrichs**  
*Operations Specialist*

Caitlin started at the District in September 2018 and is responsible for overseeing office coordination and human resource functions. Caitlin graduated from Washington State University with a Bachelor of Arts in Business Administration and minor studies in Art History and Human Resources. She was born and raised in Pullman, WA. In her spare time, she can be found enjoying time at her cabin, reading, and spending quality time with her husband, family, friends and dogs (Lulu and Birdie).



**Catherine Belme**  
*AmeriCorps Restoration and Education/Outreach Technician*

Catherine is an AmeriCorps member working in education, outreach, and restoration. Growing up in Colorado she has always had a love for nature and conservation. Catherine graduated from University of Southern California in 2011. While living on the road as an advocate for public land conservation and pursuing her career in landscape, nature, and outdoor recreation, Catherine's passion for conservation grew and she decided she wanted to do something more to be able to help heal the land and educate others on sustainable and responsible interaction with the land. She thrilled to have begun working with the District to improve the Palouse. When not at PCD you can find her photographing the region, backpacking, climbing, or practicing yoga.



**Emily Novack**  
*AmeriCorps Restoration and Education/Outreach Technician*

Emily is an AmeriCorps member working in education, outreach, and restoration. After earning her B.A. in Environmental & Sustainability Studies from George Mason University, Emily was a Student Conservation Association intern in California working on public lands. While attending school in her home state of Virginia, she worked and volunteered for multiple environmental non-profits in her area. She enjoys hiking, backpacking, traveling, and road trips to new places. She is excited to learn more about riparian areas and explore the Northwest region while serving her time here.



**Nicole Stubbs**  
*AmeriCorps Restoration and Education/Outreach Technician*

Nicole is an AmeriCorps member working in education, outreach, and restoration. Growing up in North Carolina, Nicole attended UNC Asheville in the heart of the Blue Ridge Parkway where she got her BS in Environmental Studies with a concentration in Earth Science. She has plans to return to school for a masters in Hydrology because of her passion for the study of surface and ground water and the need for its preservation and revitalization. Akin to this love of water, she enjoys kayaking, swimming, and hiking; she believes that every trail should end at a body of water (no matter how small).



1615 NE Eastgate Blvd. Suite H  
Pullman, WA 99163

NONPROFIT ORG.  
U.S. POSTAGE PAID  
PULLMAN, WA  
PERMIT NO.95

**RETURN SERVICE REQUESTED**

### **Visit our webpage!**

**[www.palousecd.org](http://www.palousecd.org)**

If you would like to be added to our e-newsletter,  
please sign-up by subscribing on our webpage,  
calling the district, or sending an email to  
[palousecd@palousecd.org](mailto:palousecd@palousecd.org).

#### **UPCOMING EVENTS**

##### **December**

**11 Palouse Conservation District Board Meeting 3:45pm**

*Palouse CD Office, Pullman*

**13 Palouse CD Winter Talk Series 6pm**

*Paradise Creek Taproom Trailside, Pullman*

##### **January**

**8-9 PNDSA Cropping Systems Conference**

*Three Rivers Conference Center, Kennewick*

**17 Palouse CD Winter Talk Series 6pm**

*Wawawai Canyon Winery, Uniontown*

##### **February**

**27 Alternative Cropping Symposium 10am-3pm**

*Gladish Community Center View Room, Pullman*

##### **March**

**7 Palouse CD Winter Talk Series 6pm**

*Palouse Caboose, Palouse*

**12-14 Healthy Soils, Healthy Region Workshop**

*Pendleton Convention Center, Pendleton OR*

#### **Board of Supervisors**

Larry Cochran, Chair (1990)

Chris Heitstuman (1998)

Mark Whitmore (1998)

Mary Collins (2017)

Shilo Sprouse (2018)

**Associate Board Members:** Vacant



The Palouse Conservation District is pleased to announce an opportunity to contribute to conservation and your community by serving on the Board of Supervisors. Supervisors are public officials who direct the activities of the conservation district. Although they serve without compensation, they are eligible to be reimbursed for appropriate expenses. For more information, please contact the Palouse Conservation District at 509-332-4101 x 103 or visit the Washington State Conservation Commission website at <http://www.scc.wa.gov/>