

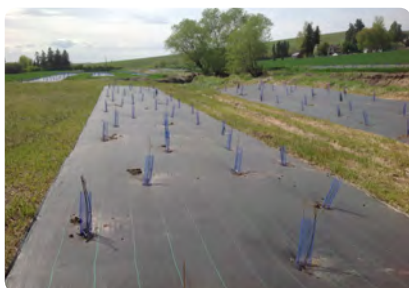
Palouse Conservation District

Jennifer Boie, District Manager
1300 NE Henley Court #6 Pullman, WA 99163
(509) 332-4101 | palousecd@palousecd.org | www.palousecd.org
Board Chair: Larry Cochran



State Legislative District #9
Congressional District #5

2014 Feature Accomplishment: Riparian restoration on the South Fork Palouse River



Top: Prior to project implementation, this site on the South Fork Palouse River lacked adequate riparian vegetation and had severe bank erosion in many places. Bottom: Project implementation included using native trees and shrubs to establish a one mile long, 50 foot riparian buffer on both sides of the river. Photos: Drew Schudt, Palouse Conservation District

RESOURCE CHALLENGE The South Fork Palouse River has several water quality impairments that are a concern for watershed residents. To address these concerns, local landowners are stepping up to establish healthy, native vegetated strips along streams, called riparian buffers, to improve water quality and provide wildlife habitat. These riparian buffers improve water quality by providing protection from runoff from surrounding land uses, stabilizing eroding stream banks, and providing shade to reduce water temperatures.

PROJECT SUMMARY AND RESULTS

Palouse Conservation District worked with local landowners to relocate livestock feeding areas away from the South Fork Palouse River, develop off-stream water facilities for livestock, create livestock waste storage facilities, plant native riparian buffers, and install mulch to enhance buffer establishment and reduce weed pressure. These projects will help address many of the pollutants for which the South Fork Palouse River is impaired, including ammonia, dissolved oxygen, fecal coliform bacteria, PCBs, chlorinated pesticides, temperature, and pH.

The next steps include completing projects to enhance upland areas, increase wildlife habitat, and restore adjacent wetland areas.

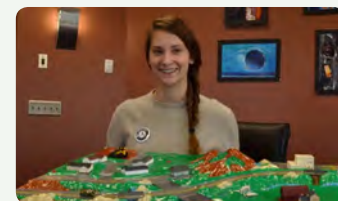
KEY PARTNERS: Department of Ecology; WA State Conservation Commission; AmeriCorps

Other Accomplishments



The Palouse Prairie Restoration Cost Share Program

was launched to help landowners enhance Palouse Prairie sites with native grasses and forbs. Photo: Drew Schudt, Palouse Conservation District



Through local partnerships, Water on Wheels was expanded in SE Washington. This EnviroScape Model was one tool used to teach about water quality. Photo: Mikaela Legarsky, Palouse Conservation District AmeriCorps Member



Participants view a demonstration of advanced spray systems through precision spraying during a Precision Agriculture Series event. Photo: Jennifer Boie, Palouse Conservation District

More Work to Do!

- **Direct Seed Partnership:** Expanding direct seed and precision agriculture education and cost-share.
- **Palouse River Basin Riparian Restoration:** Partnering with voluntary landowners to improve water quality and enhance wildlife habitat.
- **Palouse Prairie Phase III:** Conducting an inventory of Palouse Prairie remnant sites.
- **Snake River Salmon Recovery:** Providing outreach to landowners on opportunities to benefit salmon recovery.